

**Title: Observation of Northwest passage**

**Field leader:** Hajime Yamaguchi

**Institution:** Graduate School of Frontier Sciences , The University of Tokyo

**Address:** Rm 6E5 , Kibanto bldg. 6F , UT Kashiwa campus , Kashiwanoha 5-1-5 ,  
Kashiwa-shi , Chiba 277-8561 Japan

**phone:** +81-04-7136-4114

**Programme:** Sea ice prediction and construction of an ice navigation support system  
for the Arctic sea routes

**Principal Investigator:** Hajime Yamaguchi

**Proj. Period:** 2011 - 2015

**Institution:** Graduate School of Frontier Sciences , The University of Tokyo

**Co-research Institution & Scientist (out of JPN):**

**Field activity planned for 2013**

**Invest. Area:** Northwest Passage

**Latitude and longitude:**

**Field Period:** July 19 – August 1

**Logistics:** Onboard observation

**Description:**

[purpose] Sea ice observation, navigation monitoring

[outline] Ice thickness , Spray , Ice conditions , Ship motion

**Participants:** Kazutaka Tateyama (Kitami Institute of Technology) and Yuya Nakano (The University of Tokyo)

**Field activity of previous year**

**Invest. Area:**

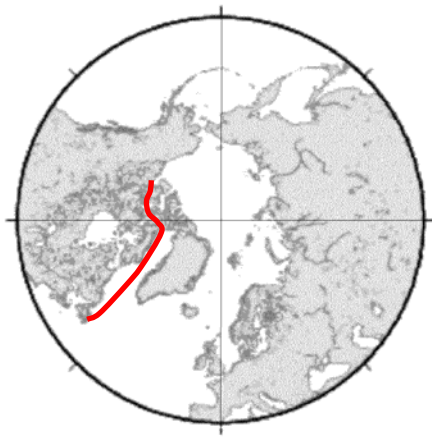
**Field Period:** July 20 – August 2

**Logistics:** Onboard observation

**Description:** Ice thickness , Spray , Ice conditions , Ship motion

**Number of participants:** 2

**Area:**



**Note:**