

**Title: Shipboard measurements of green house gases  
in the Arctic Sea**

**Field leader:** Masao Ishii

**Institution:** Meteorological Research Institute

**Address:** 1-1 Nagamine, Tsukuba, Ibaraki 305-0052 Japan

**phone:** +81-029-853-8727 **fax:** +81-029-853-8728 **E-mail:** [mishii@mri-jma.go.jp](mailto:mishii@mri-jma.go.jp)

**Programme:** Studies on greenhouse gas cycles in the Arctic and their responses to climate change (GRENE Program)

**Principal Investigator:** Shuji Aoki

**Proj. Period:** 2011 - 2015

**Institution:**

**Co-research Institution & Scientist (out of JPN):**

**Field activity planned for 2013**

**Invest. Area:** Chukchi Sea - Canada Basin

**Latitude and longitude:**

**Field Period:** September, October

**Logistics:** Research Vessel Mirai

**Description:**

[purpose] Evaluation and process understanding of the air-sea fluxes of CO<sub>2</sub> and CH<sub>4</sub>

[outline] Green house gases measurements in the atmosphere and in sea water

**Participants:** 1 (conducted together with the members of the project 6)

**Field activity of previous year**

**Invest. Area:** Chukchi Sea - Canada Basin

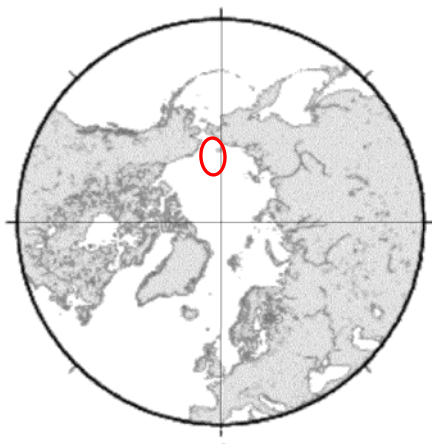
**Field Period:** September, October

**Logistics:** Research Vessel Mirai

**Description:** Green house gases measurements in the atmosphere and in sea water

**Number of participants:** 1 (to be conducted together with the members of the project 6)

**Area:**



**Note:**